

Land Protection in the Black Earth Creek Watershed



GROUNDSWELL
CONSERVANCY



Photo credit: Jason Sromovsky

A photograph of a person fishing in a river. The person is standing in the water, wearing a hat and a vest, and holding a fishing net. The river is surrounded by lush green grass and trees. The sky is blue with some clouds.

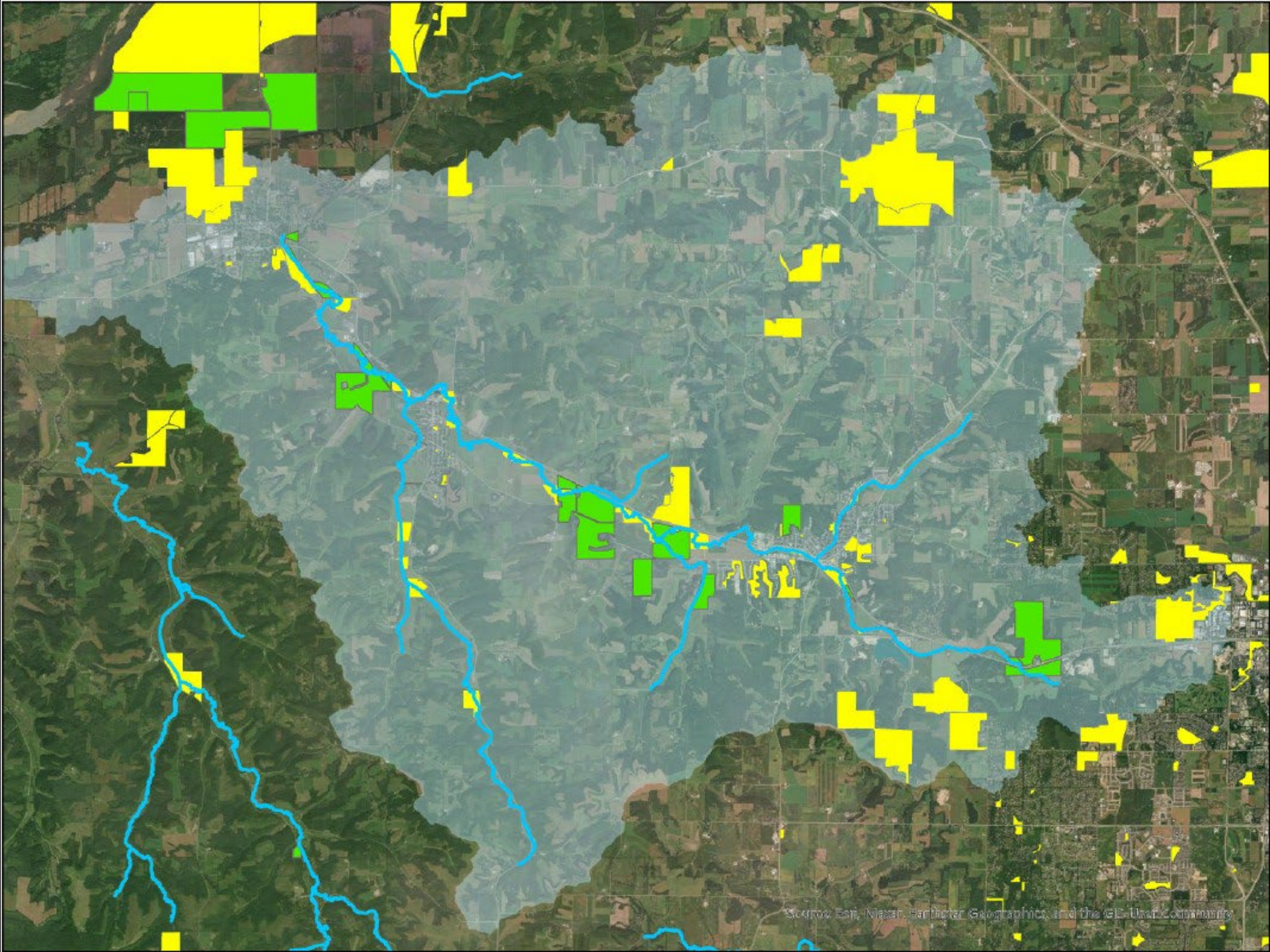
We protect special places,
forever.

Who is Groundswell Conservancy?

- 42-year-old nonprofit (1983)
- Accredited land trust
- +14,000 acres in 9 counties
- +1,200 acres in BEC valley since 2001
- 18 projects in BEC valley since 2001
- 4 more in our pipeline



GROUNDSWELL
CONSERVANCY



How does Groundswell protect land?

Buy land – Fee acquisition	Buy rights – Conservation easement
Original owner disposes property interest	Original owner maintains property interest
Groundswell owns all rights to the land	Groundswell restricts some rights
Groundswell usually transfers ownership to another entity	Groundswell maintains stewardship responsibility

Largely dependent on local appetite for conservation!



GROUNDSWELL
CONSERVANCY

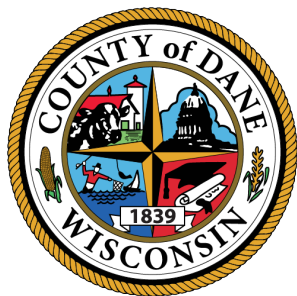
Federal



State



County



Local

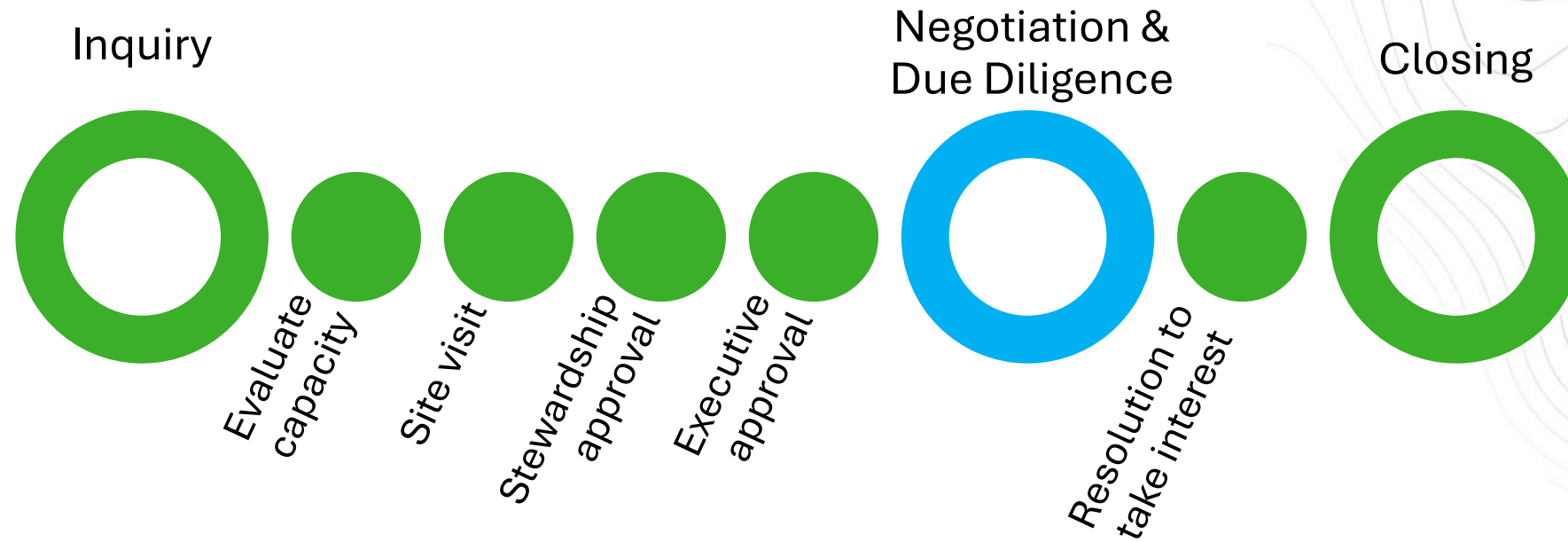


Sources of acquisition funding

Groundswell staff salaries are almost entirely funded by individual donations!



GROUNDSWELL
CONSERVANCY



GROUNDSWELL
CONSERVANCY



Photo credit: Jason Sromovsky